

BOOYA

1917 – 1974

A Cyclone Tracy Wreck

Protected as a grave,
historic shipwreck
and marine
area under the
NT *Heritage
Conservation
Act*.



All wreckage
and objects
are protected
**'Look but
don't touch'**.
No penetration diving
permitted.



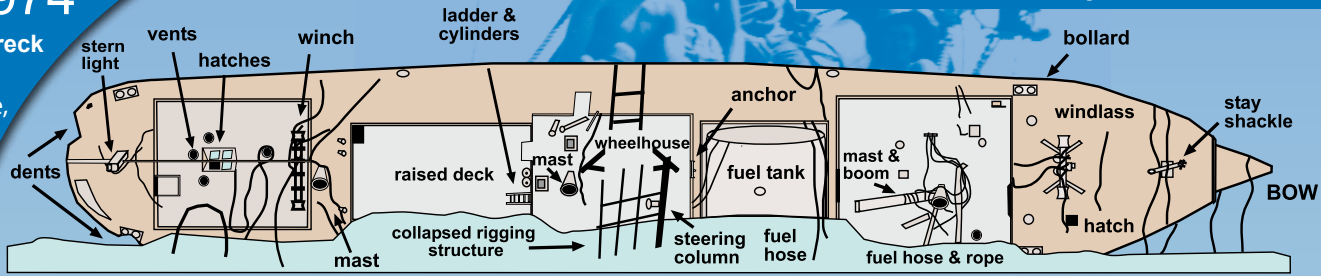
Permits are required to access.



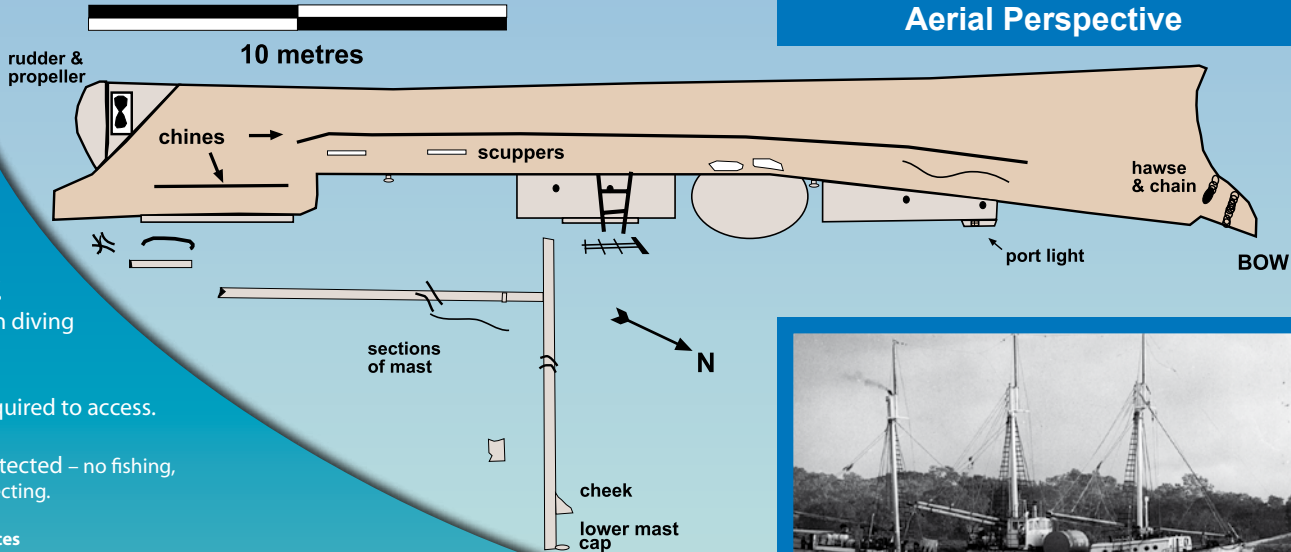
Marine life protected – no fishing,
spearing or collecting.

Heritage Conservation Services
Department of Natural Resources, Environment and The Arts
www.nt.gov.au/heritage
with the assistance of the 2006 *Booya* research team volunteers.

Deck Perspective



Aerial Perspective



Wreck of the *BOOYA*

A guide to dominant marine life.



Muller's coralfish



Ox-eye herring



Grey mackerel



Short-finned batfish



Queensland groper



Estuary cod



Cardinalfish



Moses snapper



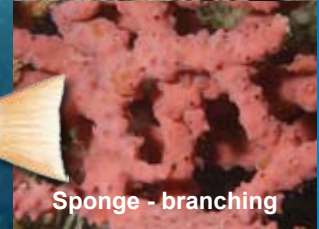
Great barracuda

Images courtesy of MAGNT, WA Museum and P. Darlington.

Northern Territory Government



Coral - soft



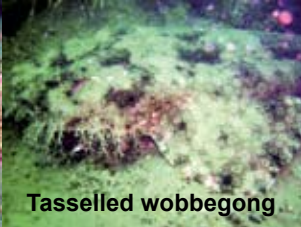
Sponge - branching



Hydroid



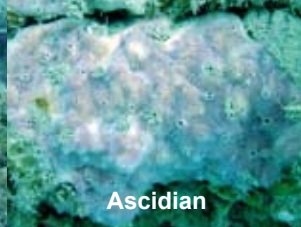
Decorator crab



Tasselled wobbegong



Sponge - vase



Ascidian



Coral - hard